

Children's Social Care

CYP Social Care & Services

Scrutiny Panel

9th September 2019

Children's Social Care - Statutory Responsibilities

- **CIN / CP, CWD and LAC Services** – in accordance with 'Working Together to Safeguard Children' (2018). The guidance is underpinned by The Children Act 1989, The Children Act 2004 and the Children & Social work Act 2017.
- **Support to Care Leavers** – in accordance with the Children and Young Persons Act 2008.
- **Multi Agency Co-Operation on Safeguarding and promoting the welfare of children** - accordance with the Children Act 2004.

Budgetary responsibility in 2019/20 – revenue and capital

Budget heading	Budget in 2019/20 (£000)
Management & Administration	£1,451,680
Assessment & Care Planning	£2,005,320
Safeguarding (CIN & CP)	£4,027,600
LAC & Corporate Parenting	£5,545,700
Residential & Resources	£18,015,190
Children's Care	£31,045,470

Priorities for 2019/20

- Deliver Middlesbrough's parenting strategy, to ensure that parents are well-supported and children and young people make good progress.
- Embed strength based practice across Children's Services to enable families to care for children safely and support them to achieve.
- Deliver edge of care, increased residential and in-house fostering provision in Middlesbrough to meet the needs of children and families.
- Deliver and evaluate a workforce strategy for the department, to enable a stable and high-performing workforce who demonstrate our values, and deliver our priorities.
- Improve the quality of social work practice, to improve outcomes for children and families.
- Strengthen the department's performance management culture, to drive continuous improvement in outcomes for children and young people and value for money within Children's Services.
- Create a Youth Parliament to give young people a greater say in the development of services and outcomes.

NATIONAL CONTEXT

Nationally, there was a £8.85 billion overspend against a budget of £8.03 billion.

(2017/18 Revenue Outturn Figures from the Ministry of Housing, Communities and Local Government)

£2billion

Funding shortfall by the year 2020.

£299 - £805

Variation in spend for same outcomes.

Newton commissioned to answer the question:

What drives variation in spend on Children's Services between authorities?

NEWTON





Five factors largely outside of councils' control account for half of all variation in spend on children's services

1. Deprivation
2. Population size 0-25
3. Disposable household income
4. Unemployment
5. Crime

National Context

- Numbers of children in care at **record levels**.
- Child protection enquiries increased **>150%**
- LAC accounts for approximately **70%** of the total spend on children's services nationally.
- Nationally evidence of successful reduction in spend:
 - **Avoid care episodes** – invest to save
 - **Prevent drift** in case work
 - Ensuring the **best setting** for the child – exploring family placements / special guardianship orders / in house foster care
 - Plans based on sound assessments – **thresholds**

Local Context

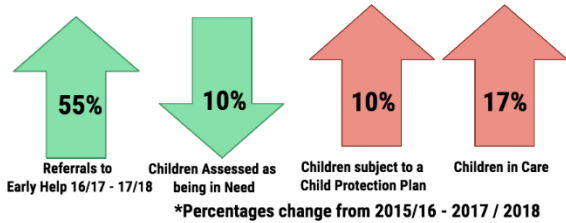
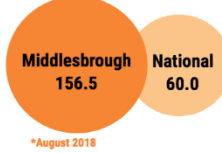
- Children's Care budget 2017/18 was **£29.827 million**
- **£1.55 million** overspend in 2017/18. Our 2017/18 overspend was 5%, half the national overspend of 10%, albeit from a better funded budget position.
- Children's Care budget 2018/19 **£30.783 million** (inclusive of identified savings). Children's Services saving of **£2.156 million for 2018/19** via:
 - **£656,000 savings**
 - Additional **demand funding of £1.5 million** has been removed
- 2018/19 end of year position was an overspend of **£3.318 million**
- Savings profile: **£2.131 million for 2019/20, £2.099m for 2020/21 and £1.792 million for 2021/22**
- Additional investment of **£1.110m** in 2018/19 was provided to Children's Services due to Ofsted requirements

Local Context

	2019/20 (£Ms):	2020/21 (£Ms):	2021/22 (£Ms):	Total (£Ms):
Total Savings Required to Balance the Budget	8.6	8.5	6.0	23.1
Savings that currently have plans (including Believe in Families)	6.0	3.8	2.6	12.4
Savings to be Identified	2.6	4.7	3.4	10.7
<i>Believe in Families:</i>				
<i>Savings Planned</i>	<i>2.1</i>	<i>2.1</i>	<i>1.5</i>	<i>5.7</i>
<i>Less Growth in MTFP</i>	<i>(1.5)</i>	<i>(1.5)</i>	<i>(1.5)</i>	<i>(4.5)</i>
<i>Net Savings Planned</i>	<i>0.6</i>	<i>0.6</i>	<i>0.0</i>	<i>1.2</i>

Middlesbrough Children's Trust

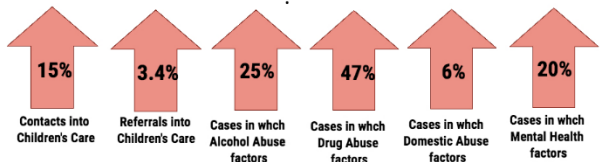
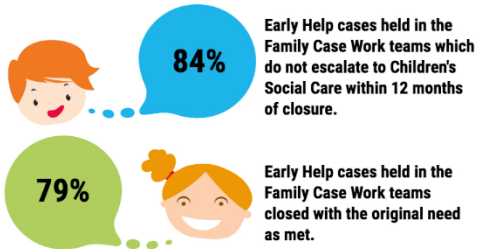
Looked After Children rate per 10,000



70% of families are supported by Social Care to live in their own family

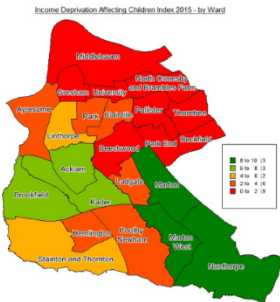


For every Child in Need (tier 4) we have 1.2 cases in Early Help



Only 5.3% of cases stepped up to Children's Social Care from Early Help result in a child becoming Looked After

- 6th Most deprived LA in the country
- 37% Children live in Child Poverty
- 63% Children live in the top 20% most deprived areas in the country



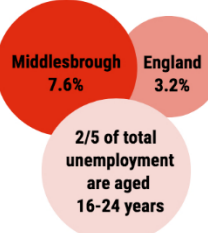
- 2nd Cleveland has the 2nd highest rate of Domestic Violence incidents in the Country
- 1st Middlesbrough has the highest rate of Domestic Violence incidents in the Cleveland



11% of the population identified as BME in the 2011 Census

50% of the BME population are under 25 years of age

Unemployment *2011 CIN Census



Children have Free School Meal compared with the national average



Children are twice as likely to have English as a second language than the Regional Average

Middlesbrough Children's Trust

Special Educational Needs

	Primary	Secondary
Outstanding	6	0
Good	29	5
Require Improvement	6	1
Inadequate	0	1

- 3.5% pupils with Statements / EHCPs & 12.5% with SEN support. Middlesbrough
- 40% of Looked After Children Middlesbrough have SEN
- 2.8% pupils with statements / EHCPs & 11.6% SEN support. England.
- 20.1% have an Education, Health and Care Plan

Education Outcomes

- 60% Middlesbrough Children achieved a Good level of development at the end of reception 2016
- 68.4% North East
- 69.3% England

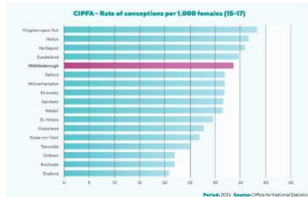
NEET
4.1% Middlesbrough
4.0% North East
2.7 England
41% Looked After Child

Absent from school
Middlesbrough - 5.8%
North East - 4.9%
England - 4.6%
*overall absence data 2014/15

Exclusions fixed period
Middlesbrough - 14.89
North East - 3.79
England - 3.88
*2014/15 DFE

Exclusions permanent
Middlesbrough - 0.17
North East - 0.08
England - 0.07
*2014/15 DFE

Teenage Pregnancy
Rate of teenage pregnancy have reduced all but two wards



CAHMs
50.18% referrals result in treatment

Young Carers



Obesity

11/12 Children in Middlesbrough classed over overweight / obese in reception and year 6 in the North East region

Demand

REFERRALS 17/18	Rate per 10,000 of children aged under 18 years
Local authority	
England¹	552.5
North East¹	601.7
Darlington	492.5
Durham	555.8
Gateshead	479.9
Hartlepool	613.5
Middlesbrough	860.0
Newcastle upon Tyne	583.4
North Tyneside	357.2
Northumberland	608.2
Redcar and Cleveland	490.6
South Tyneside	729.8
Stockton-on-Tees	586.8
Sunderland	856.8

Assessments completed 17/18		
Local authority	Number	Rate per 10,000 of children aged under 18 years
England⁴	631,090	531.8
North East⁴	32,580	617.8
Darlington	918	408.4
Durham	4,872	484.6
Gateshead	2,214	556.6
Hartlepool	1,369	682.8
Middlesbrough	2,989	922.6
Newcastle upon Tyne		
Tyne	3,413	593.1
North Tyneside	1,599	391.2
Northumberland	4,333	735.3
Redcar and Cleveland		
Cleveland	1,734	630.1
South Tyneside	1,575	531.9
Stockton-on-Tees	2,660	615.0
Sunderland	4,908	901.5

Children's Services Transformation Themes

- **Build in-house capacity in residential and fostering services to improve the unit cost of placing those children looked after by the Council**
 - Daniel Court
 - Potential extra residential home
 - Fostering campaign and specialist fostering provision
 - In house provision of services for Children with Disabilities
- **Edge of Care and Early Intervention Services to reduce the number of Children who need to become looked after**
 - No Wrong Door Trailblazer with North Yorkshire County Council (New Children's Hub)
 - Family Group Conferencing
 - Effective and intensive intervention with families who have children who are at the edge of care
 - Strong and robust panels to assess risk, monitor care planning and ensure thresholds are applied consistently and appropriately
- **One Council approach and partnership working to strengthen families in Middlesbrough and mitigate demand**
 - Improvement journey to achieve social work practice of a high quality to support families
 - Work effectively with partners to ensure families can access the support they need in a timely and effective manner to prevent escalation
 - Ensure there is a coordinated approach across the Council and with other agencies to the 'Toxic Trio' of Substance Misuse, Domestic Abuse and Parental Mental Health that are the key factors in putting children at risk

External Scrutiny

Ofsted:

- Annual self – evaluation of social work practice
- Annual conversation re progress and plans
- Focused visits on a potential area of improvement or strength
- Standard inspection , one every in three year period
- Children’s home Inspection

CQC:

- Home Support Inspection

Peer review